

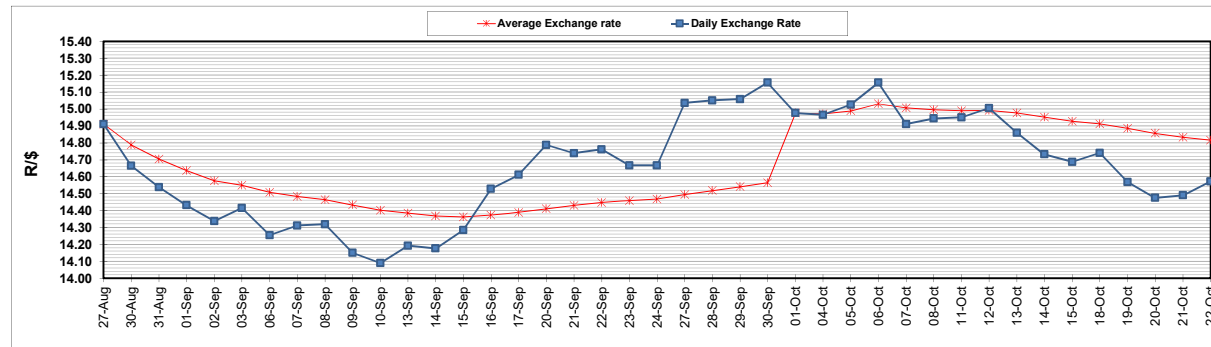
	PETROL 95 ULP	PETROL 93 ULP & LRP	DIESEL 0.05%	DIESEL 0.005%	ILL. PAR.
GAUTENG PUMP PRICE (SA c/l) AS FROM 06/10/2021	1,833.000	1,811.000	-	-	-
WHOLESALE PRICE (SA c/l) AS FROM 06/10/2021	-	-	1,571.780	1,575.180	980.488
SINGLE NATIONAL MAXIMUM RETAIL PRICE	-	-	-	-	1,240.000
BASIC FUEL PRICE - 22/10/2021 (SA c/l)	949.505	927.736	910.195	913.602	904.355
PRESS RELEASE CONTRIBUTION TO BFP 06/10/2021 - 22/10/2021 (SA c/l)	818.310	806.310	771.630	775.030	767.128
UNIT OVER/(UNDER) RECOVERY - 22/10/2021 (SA c/l)	(131.195)	(121.426)	(138.565)	(138.572)	(137.227)
AVERAGE BASIC FUEL PRICE 01/10/2021 - 22/10/2021	926.415	909.735	909.272	912.937	902.913
AVERAGE UNIT OVER/(UNDER) RECOVERY 01/10/2021 - 22/10/2021	(108.330)	(103.088)	(142.329)	(142.595)	(141.785)

ANALYSIS MOVEMENT OF AVERAGE OVER/(UNDER) RECOVERY

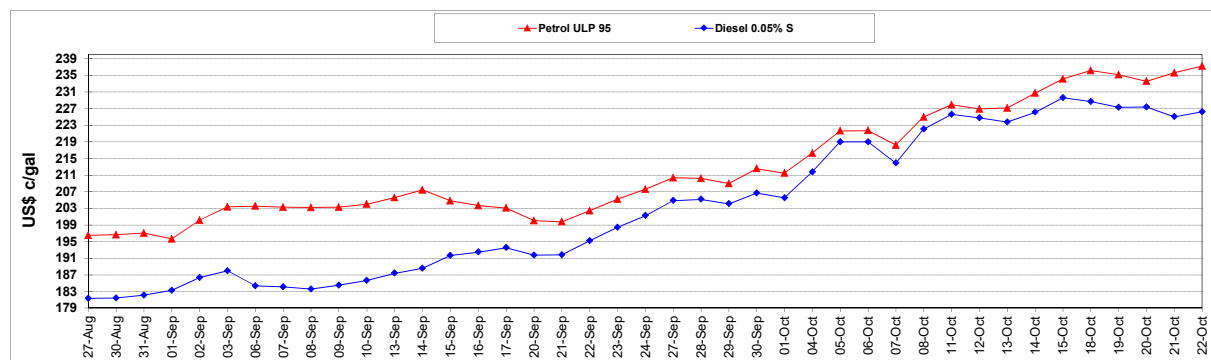
	PETROL 95	PETROL 93	DIESEL 0.05%	DIESEL 0.005%	ILL. PAR.
- MOVEMENT IN INTERNATIONAL PRODUCT PRICES	(92.648)	(87.688)	(126.937)	(127.140)	(126.501)
- MOVEMENT IN EXCHANGE RATE	(15.682)	(15.399)	(15.392)	(15.454)	(15.284)
AVERAGE UNIT OVER/(UNDER) RECOVERY 01/10/2021 - 22/10/2021	(108.330)	(103.088)	(142.329)	(142.595)	(141.785)

R/\$ EXCHANGE RATE - (R/\$14.5730 - 22/10/2021)

EXCHANGE RATE USED IN BASIC FUEL PRICE



INTERNATIONAL PRODUCT PRICES OF BASKET USED IN BASIC FUEL PRICE



BASIC FUEL PRICE IN SA CENTS PER LITRE

